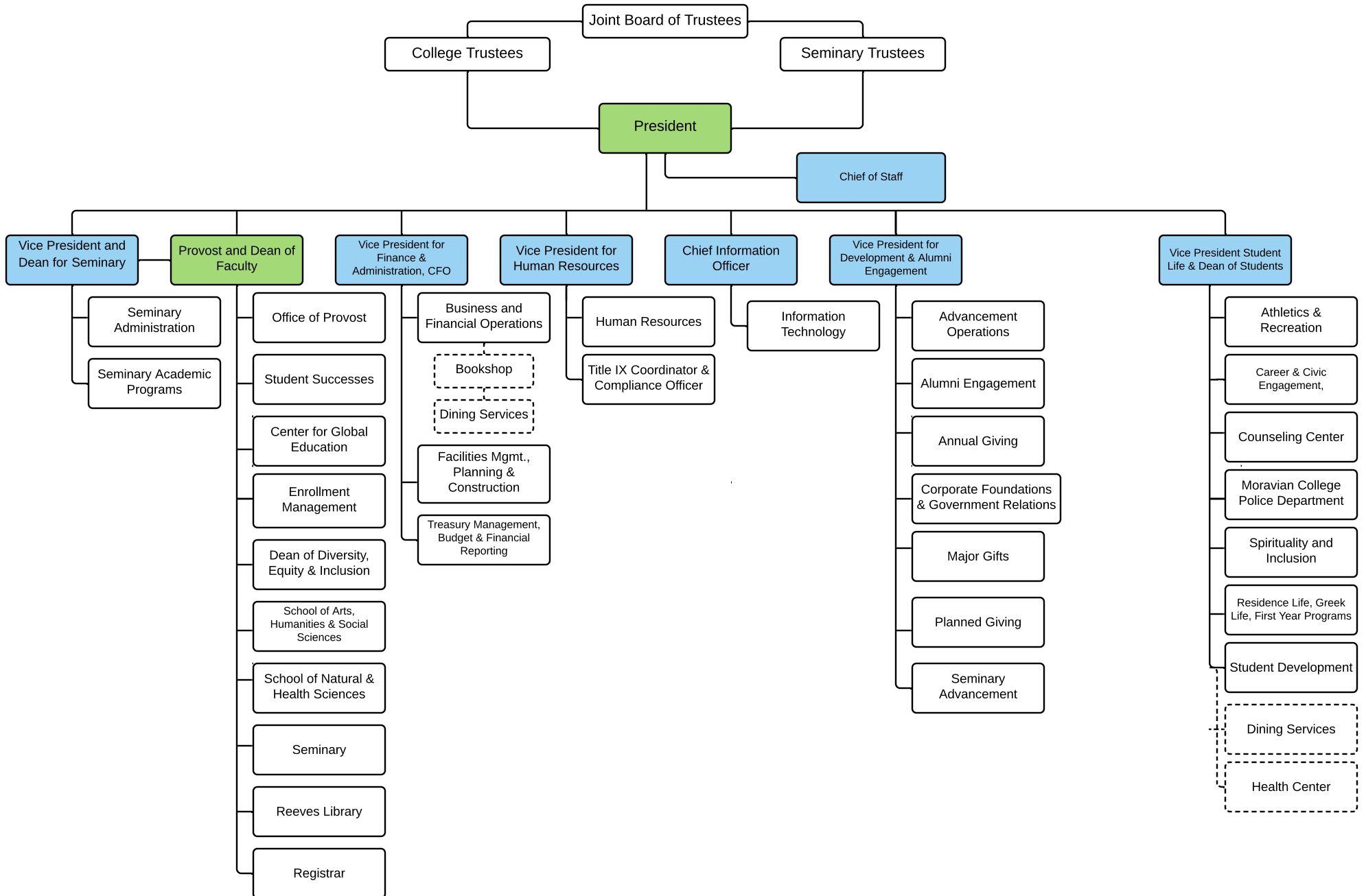
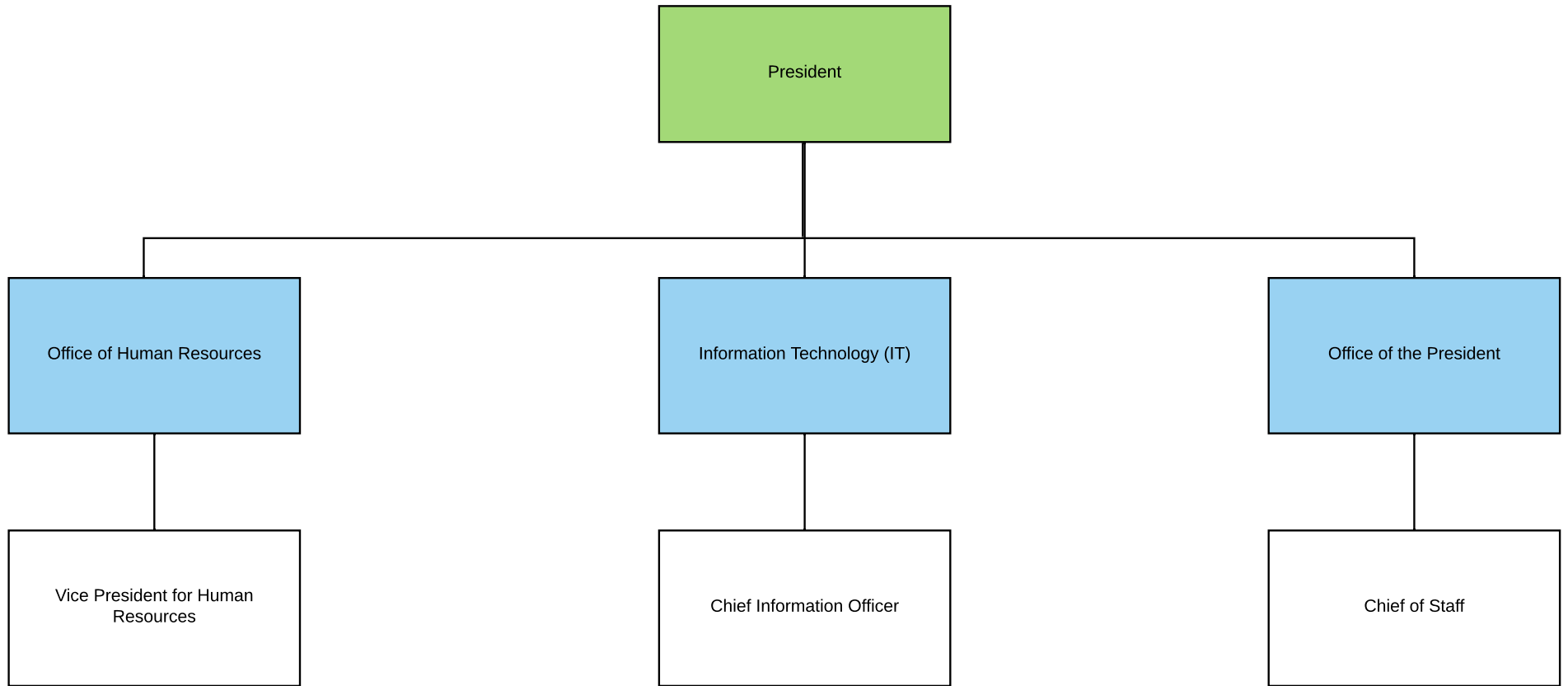


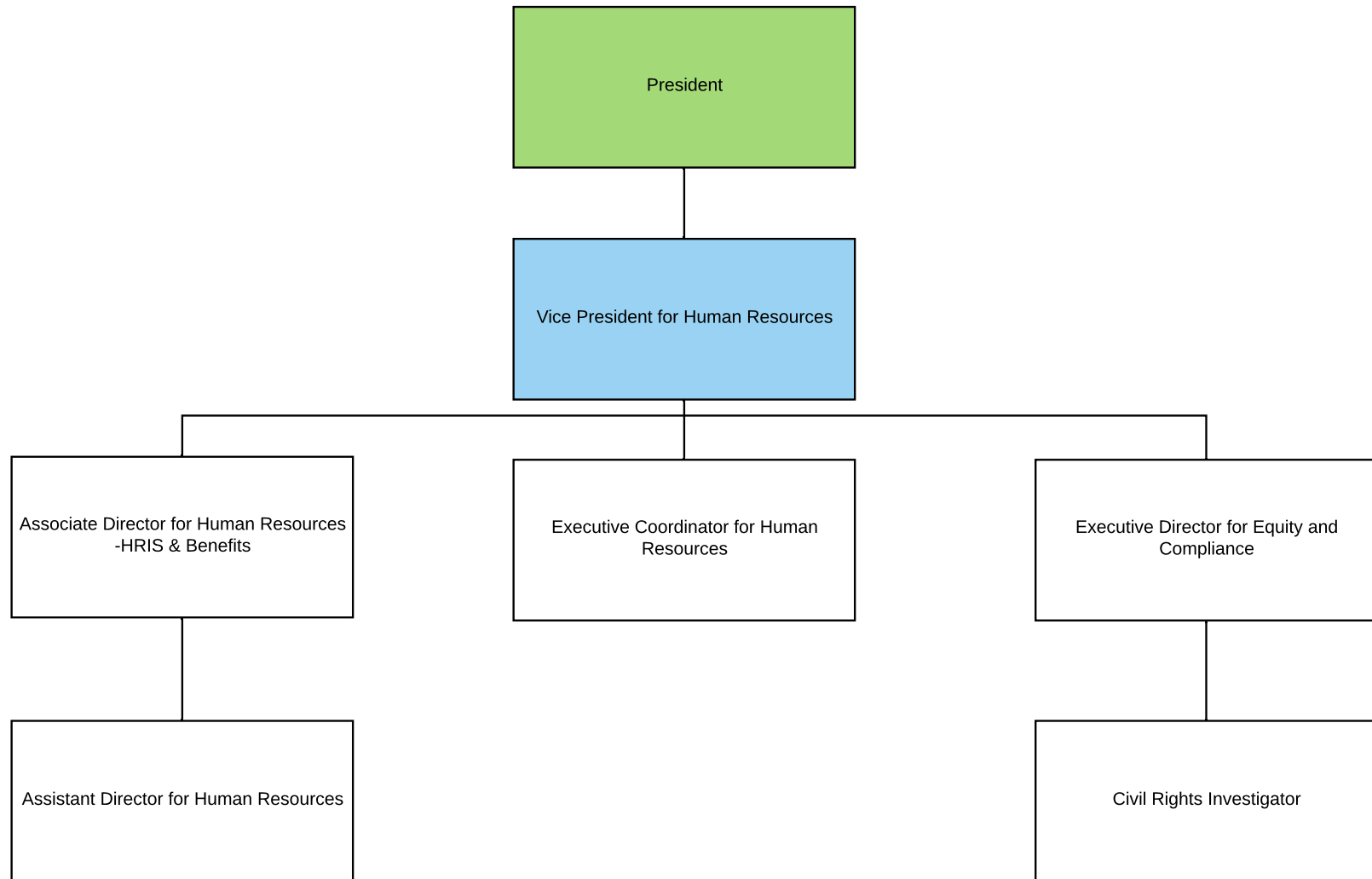
# Administrative Organization of the College Expanded



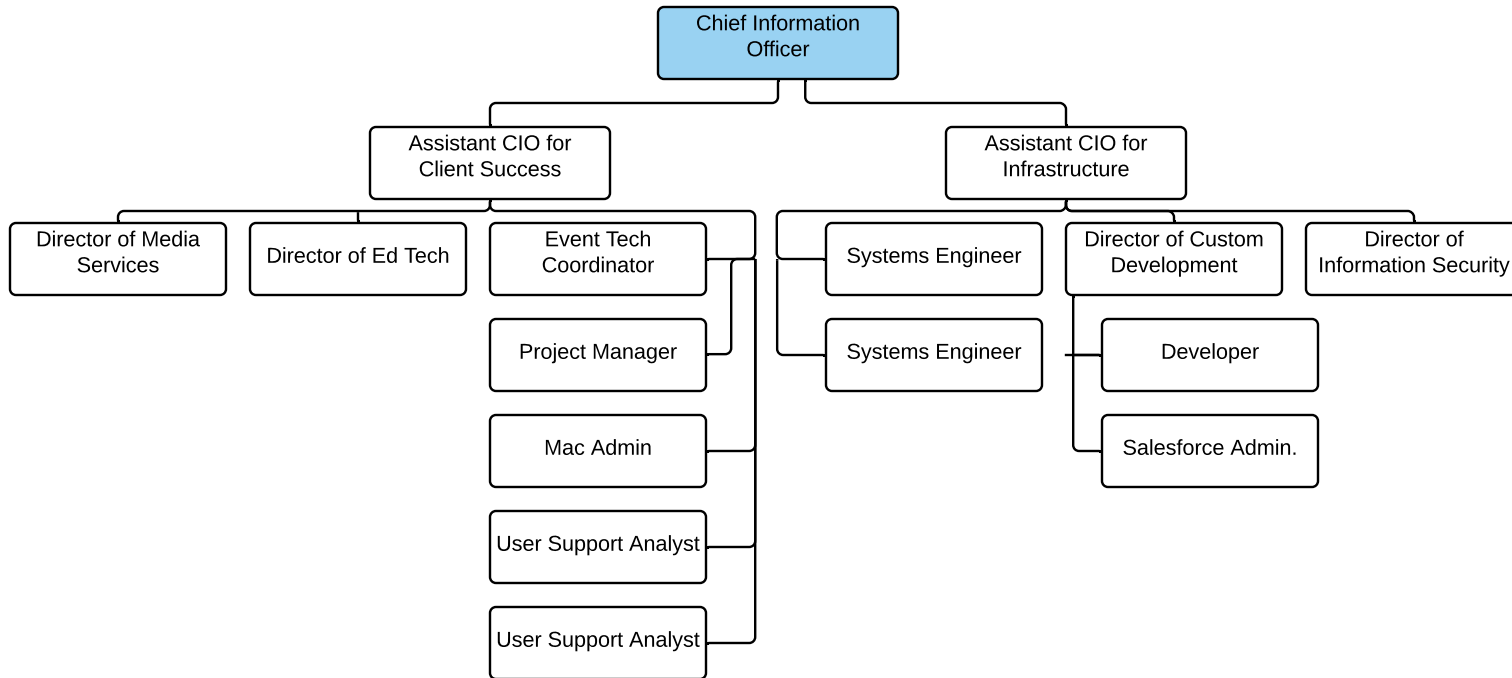
# President's Office



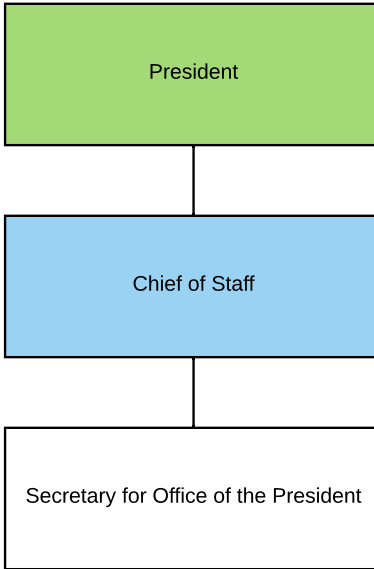
# Human Resources



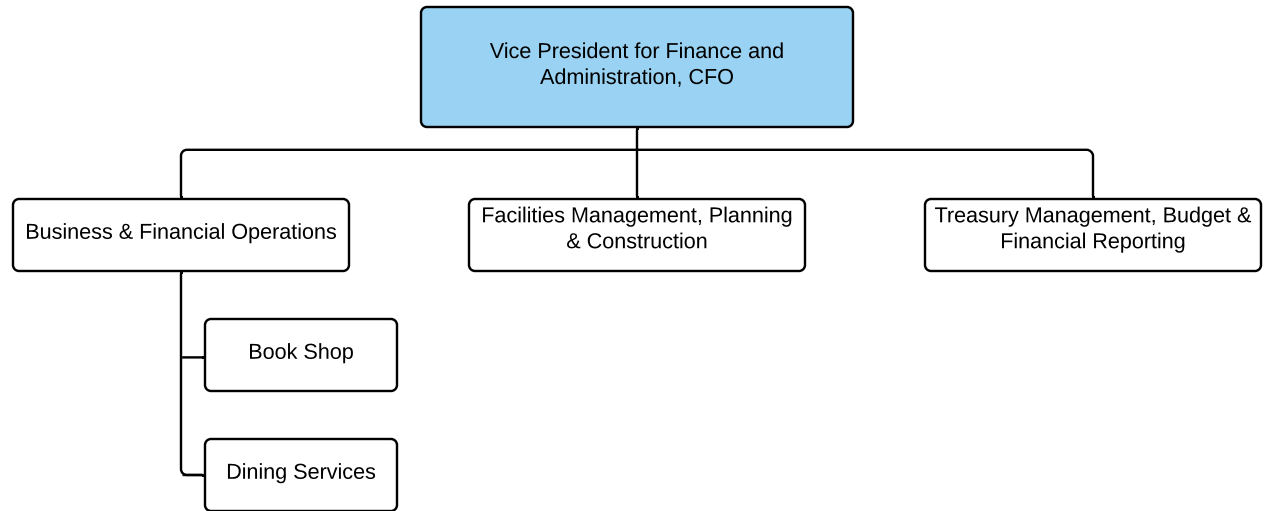
# Information Technology



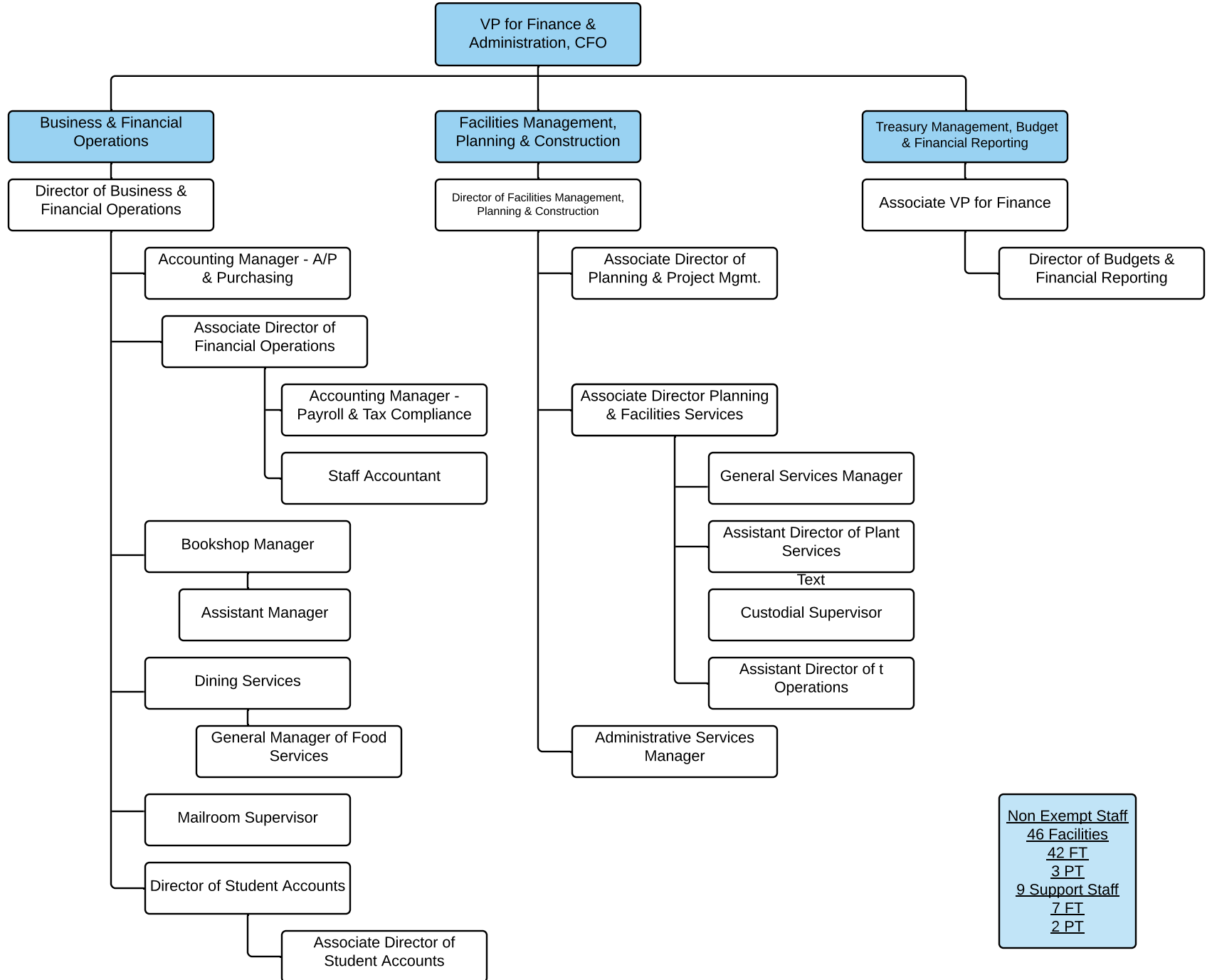
## Office of the President



## VP for Finance and Administration, CFO



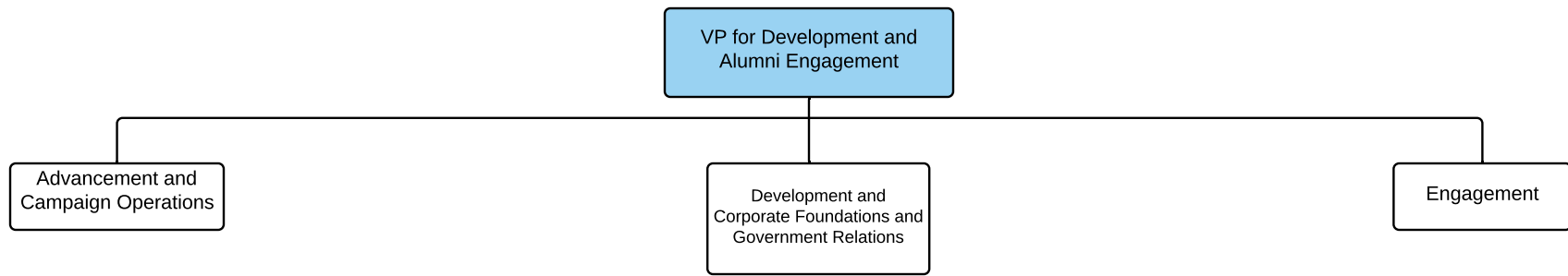
# VP for Finance & Administration, CFO Expanded



<u>Non Exempt Staff</u>
<u>46 Facilities</u>
<u>42 FT</u>
<u>3 PT</u>
<u>9 Support Staff</u>
<u>7 FT</u>
<u>2 PT</u>

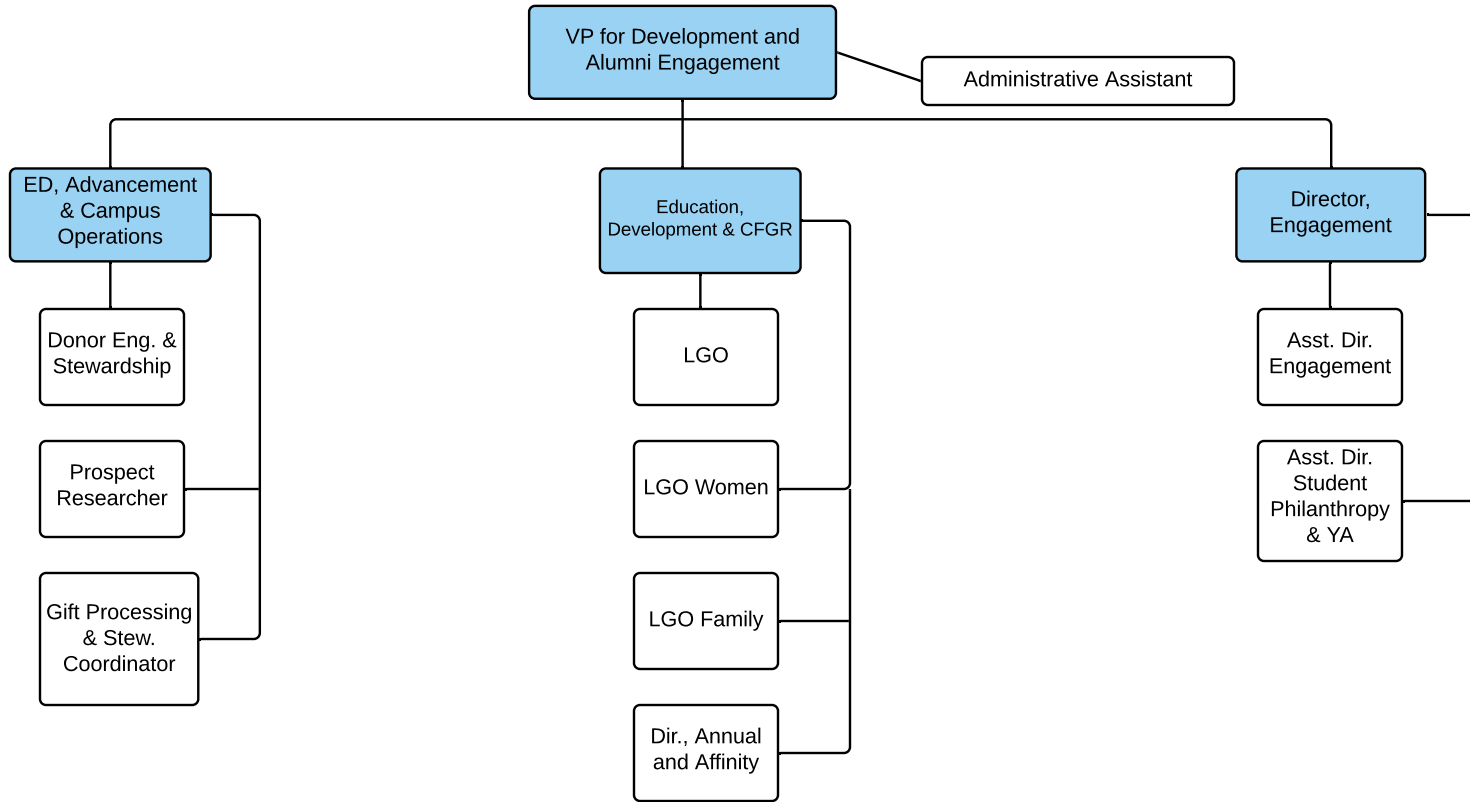
## VP for Development and Alumni Engagement

---



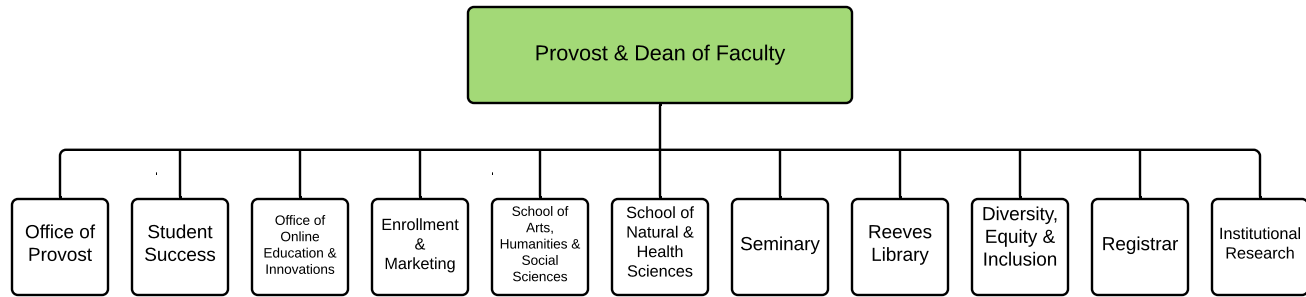


# VP for Development and Alumni Engagement



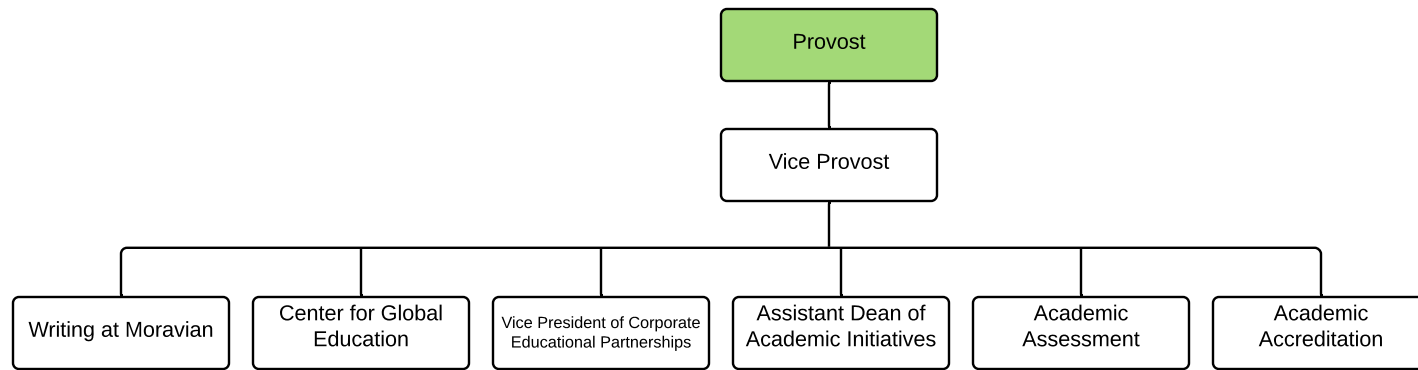
## Provost and Dean of Faculty

---



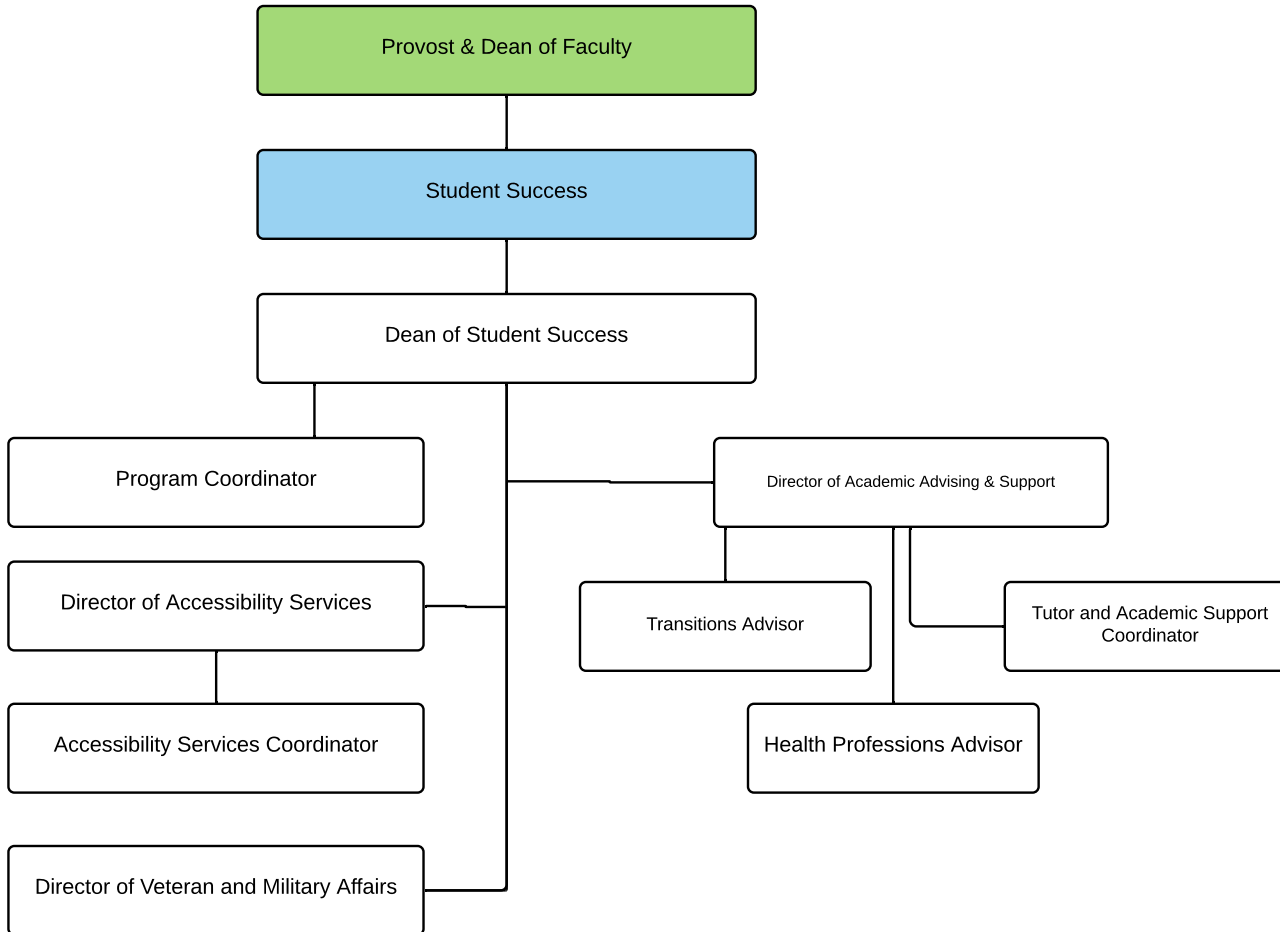
# Provost

---



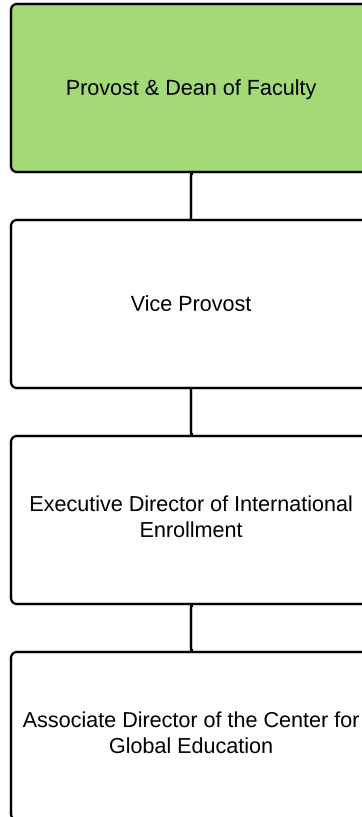
# Student Success

---



## Center for Global Education

---

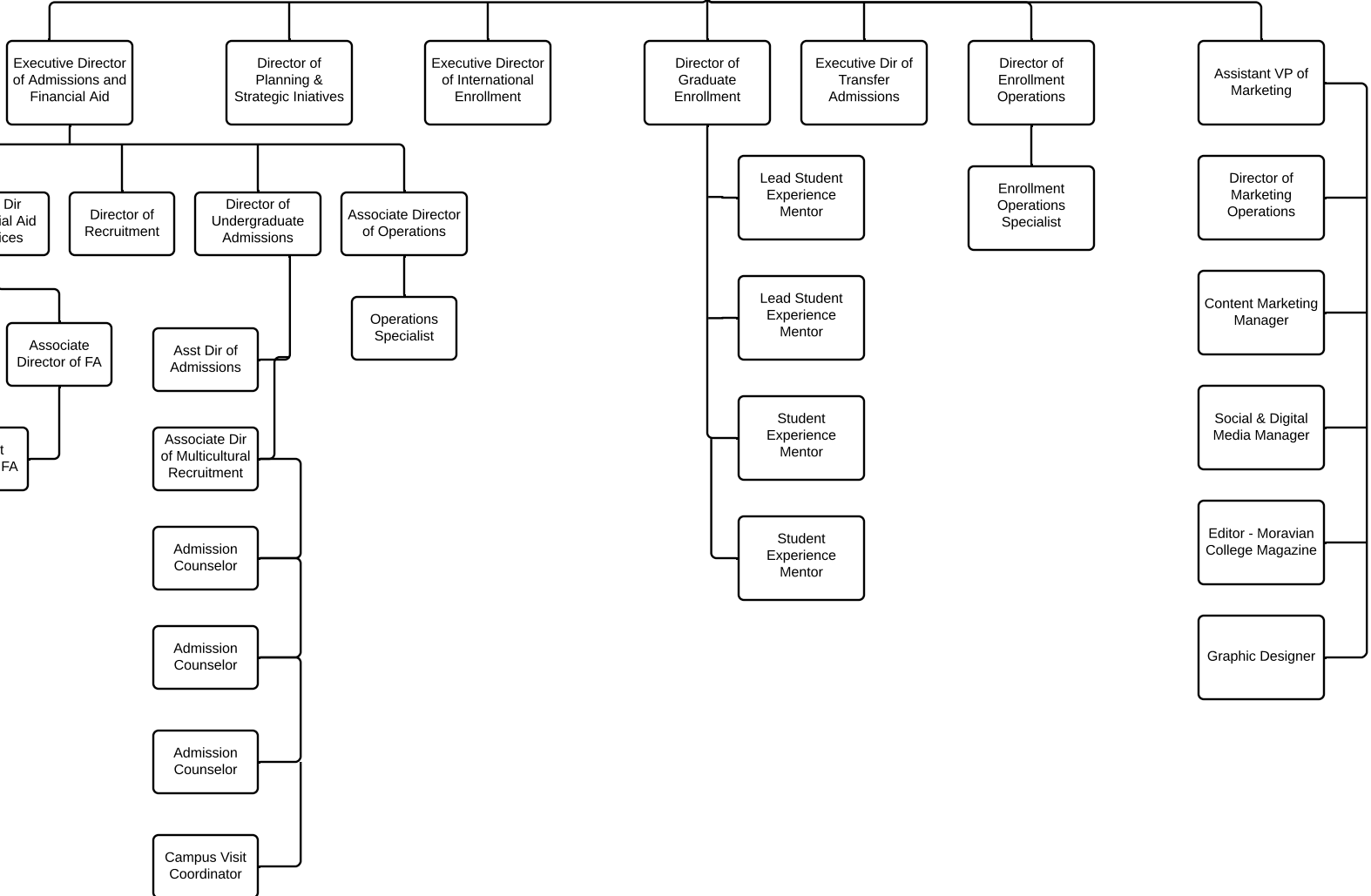


# Enrollment & Marketing

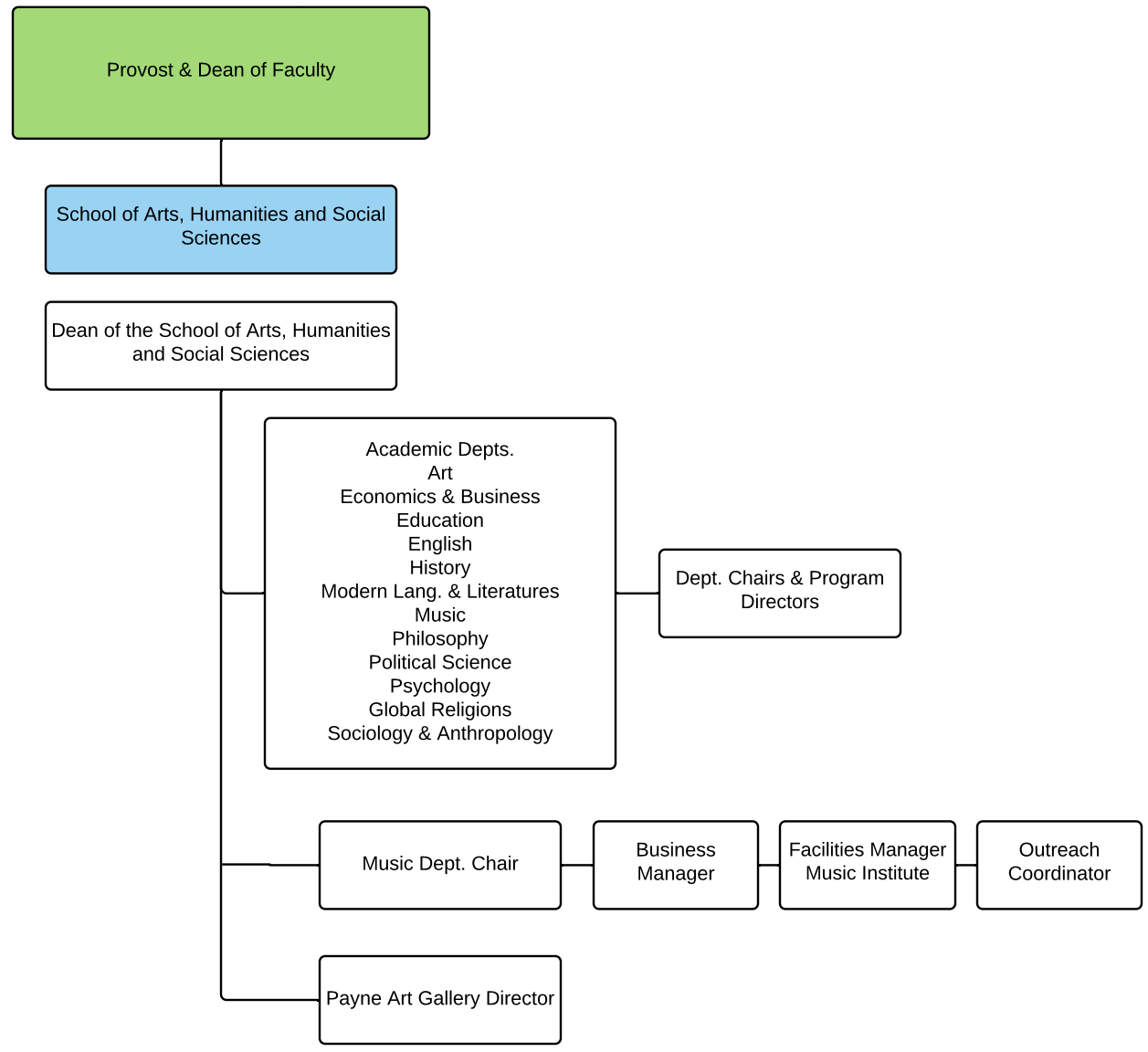
Provost & Dean of Faculty

Enrollment & Marketing

Vice President of Enrollment & Marketing

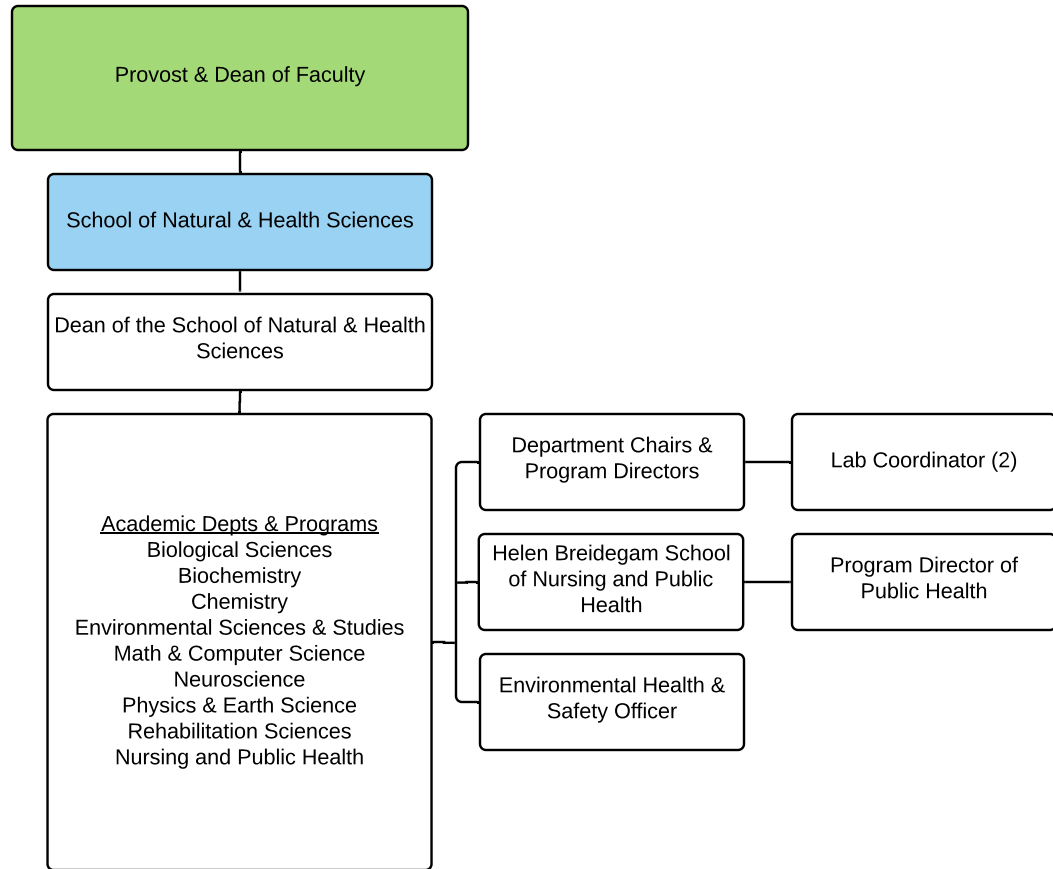


# Copy of School of Arts , Humanities And Social



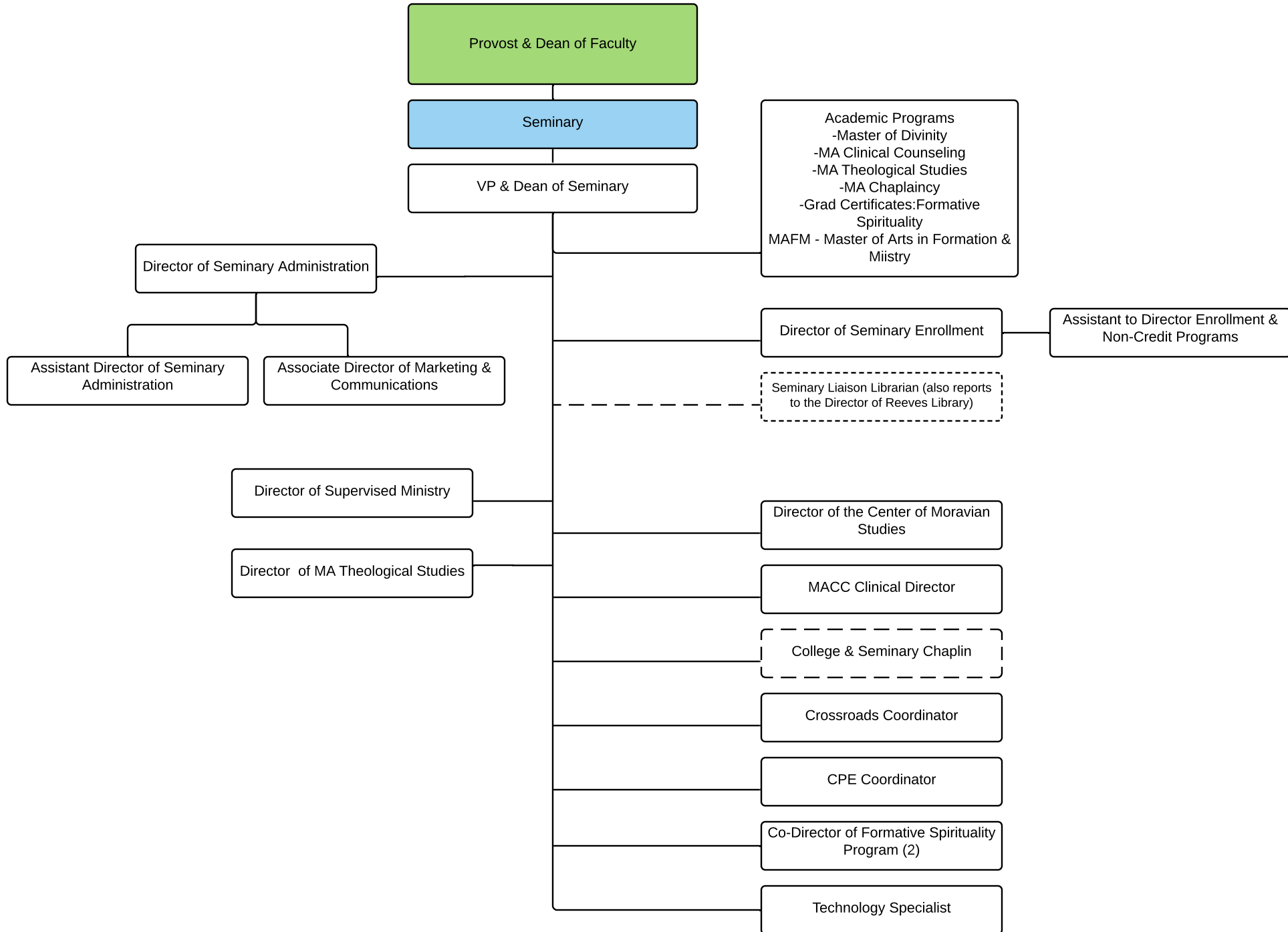
# Copy of School of Natural & Health Sciences

---

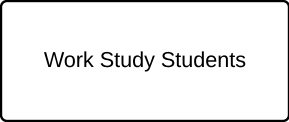
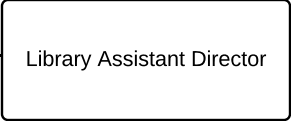
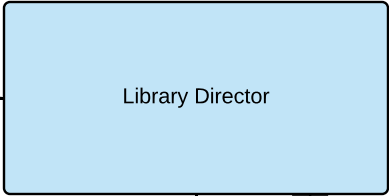




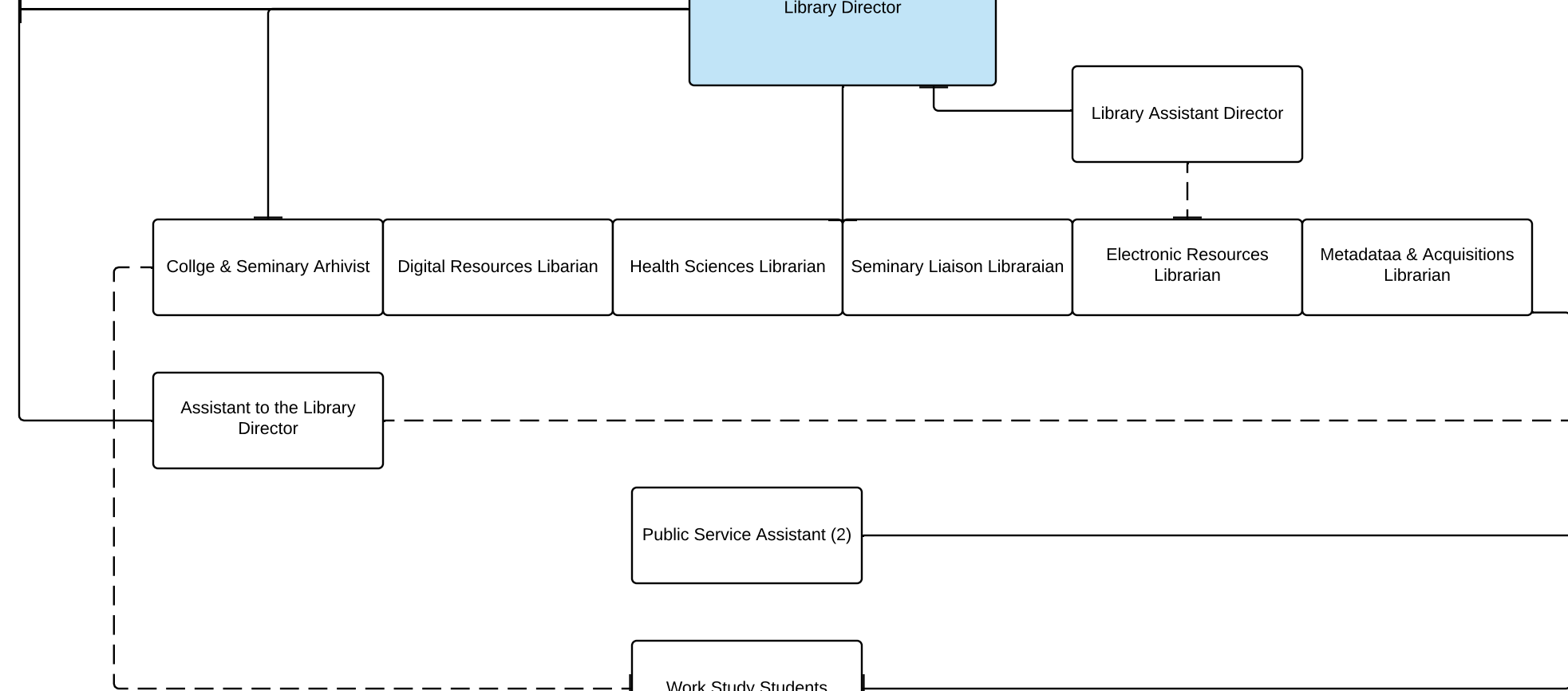
# Seminary



Reeves Library

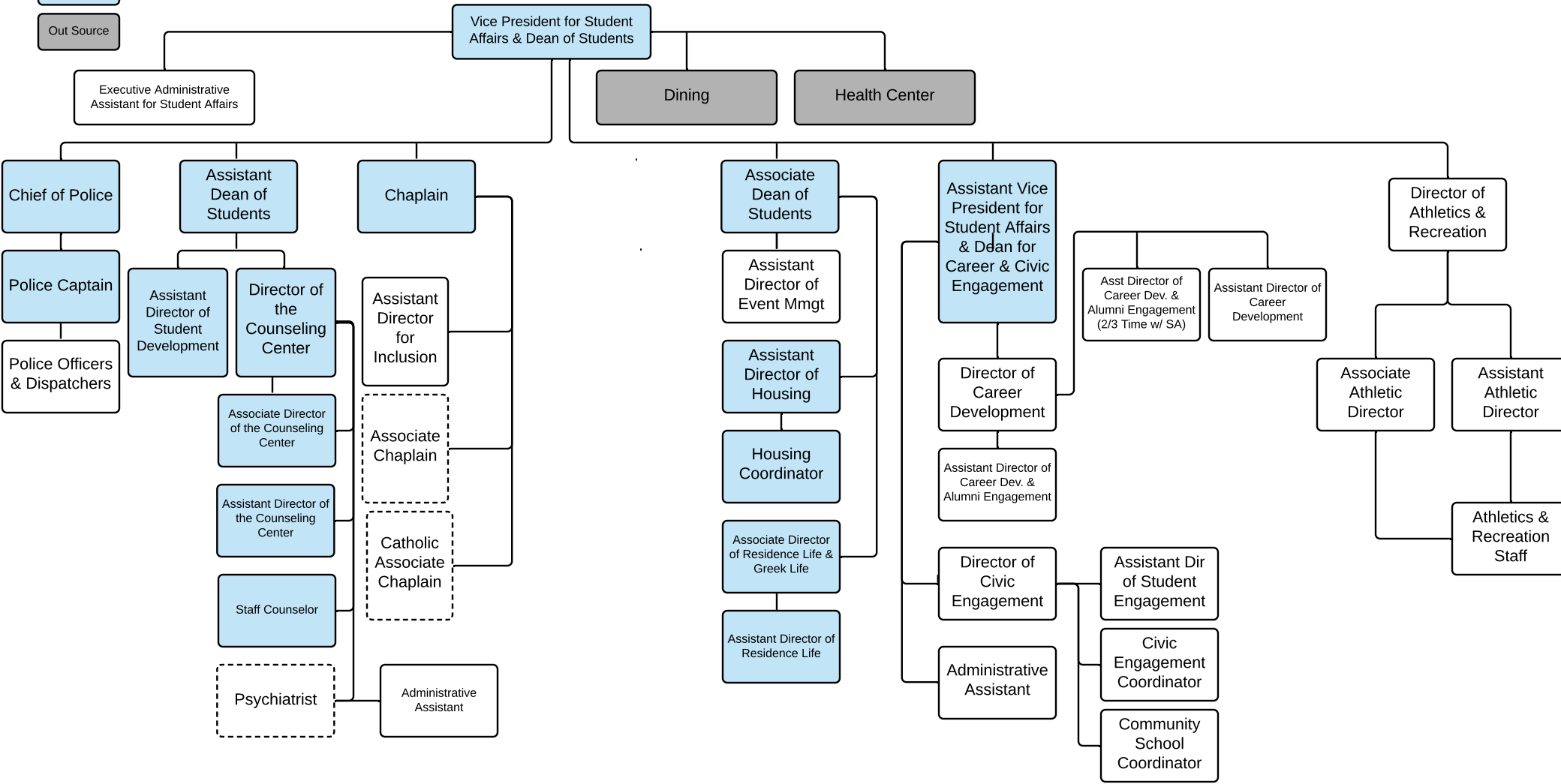


Text



# Division of Student Life

- Full time
- Part Time
- On Call
- Out Source



Athletic: 25 FT  
 81 PT/Interns/VO  
 Support Staff 2 FT

Campus Police:  
 14 FT (PO)  
 1 PT (PO)

Dining Services: 6 Mgr. 80 FT,  
 37 PT, 6 On-Call

Health Center: 2 FT, 1 PT